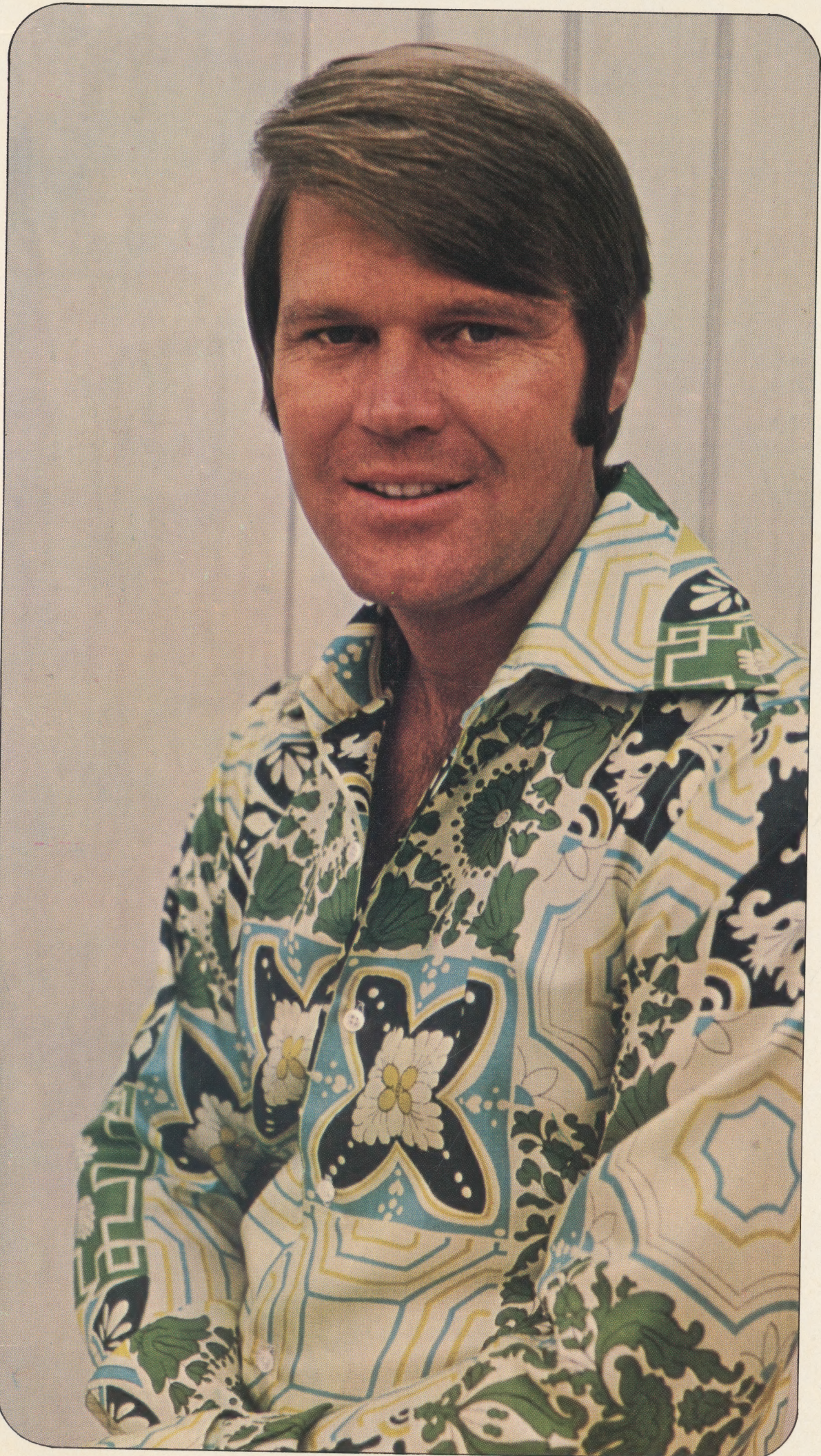


STEREO SPC-3274



THE
GLEN
CAMPBELL
ALBUM

ONLY THE LONELY / LET ME TELL YOU
'BOUT MARY / THROUGH THE EYES OF A
CHILD / SAME OLD PLACES / PRIMA DONNA
THAT'S ALL RIGHT / CAN'T YOU SEE I'M
TRYIN' / WOMAN'S WORLD / HEARTACHES
CAN BE FUN

pickwick/33
RECORDS
BY ARRANGEMENT WITH
CAPITOL
RECORDS

Statistics for Glen Campbell at one time included the difficult pleasures of a youngster in Delight, Arkansas, who hoarded the money he earned by picking cotton until there was enough for an afternoon in the local movie house.

Today, they serve as the only sane method for keeping track of the significant achievements of a multi-faceted entertainer, who has become one of America's favorite pastimes in two years. Statistics such as:

--The "Glen Campbell Goodtime Hour," which air Sundays, on CBS-TV, is one of the top-rated variety shows on TV. It began the current TV trend to country-flavored programming.

--Recipient of ten Gold Records, signifying as many Capitol albums and singles to each reach the magic \$1-million figure in sales or one million copies sold.

--Winner of five Grammy Awards from the National Academy of Recording Arts & Sciences; six awards from the Academy of Country & Western Music; and honored as "Entertainer of the Year" in 1968 by the Country Music Association.

--Star of Paramount's "Norwood," for producer Hal B. Wallis, who will also star Glen in three subsequent films. It was Wallis who brought the entertainer to motion pictures, co-starring with his boyhood idol, Academy Award winner John Wayne, in "True Grit," one of the highest grossing films of 1969.

--Selected by Photoplay Magazine as "Most Promising New Male Star" and certified by Cash Box Magazine as the most programmed artist on radio. The latter honor made him only the second vocalist in 12 years to supplant Frank Sinatra; the other was Elvis Presley, in 1965.

It all began to happen for Glen the night comedian Joey Bishop invited the singer to appear on his late night variety show on ABC-TV and predicted, "Someday, in the very near future, this talented young man is going to have his own television show." An interested viewer that evening was Tommy Smothers, and within two months the Smothers Brothers announced that their hour-long series would be spelled during the summer month of 1968 by a show hosted by Glen Campbell.

Although Glen's rise to success seemingly took place in the span of a few months, it actually took closer to seven years of studio work and recordings before the seventh son of a seventh son was to get his break.

Born in the small town of Delight, Arkansas, Glen's musical career began at age four when his first musical instrument, a Sears & Roebuck guitar. By the time he was six years of age, young Campbell joined his first band, a western group, led by his uncle, Dick Bills, in Albuquerque, New Mexico.

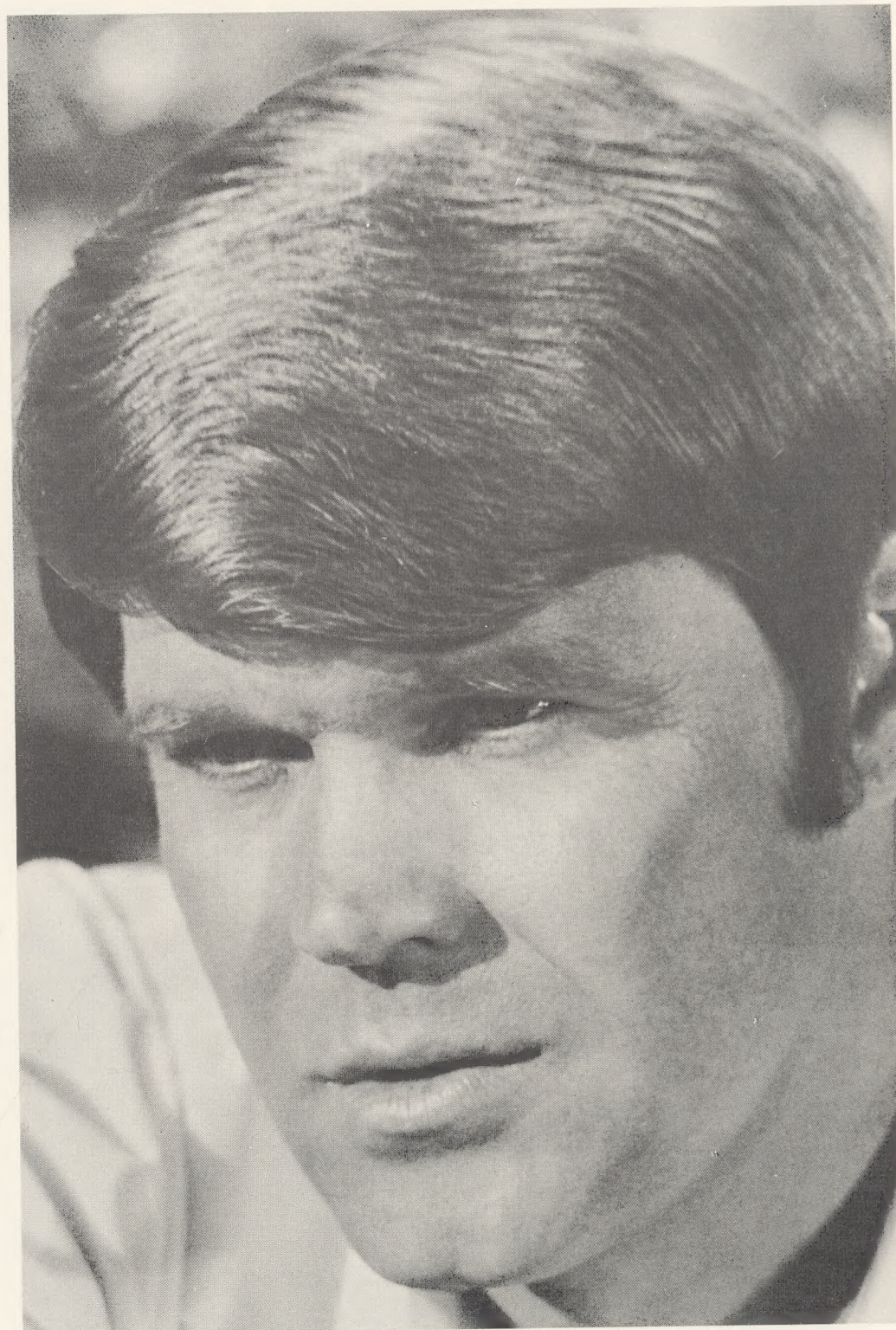
During the next few years, Glen toured with his uncle and, eventually, his own band. Albuquerque and a club called the Hitching Post were home base. One evening, while performing at the club, Glen met Billie Nunley, the girl who was soon to become Mrs. Glen Campbell. Shortly after they were married, the two of them, along with a '57 Chevrolet, a small trailer of belongings and about \$300 departed for California and what was supposed to be a new job and opportunity. It was early 1960, and as it turned out, there wasn't any job. Glen, however, managed to find work and he played in a variety of different rock groups around the city.

Still, most of his time was taken up with recording sessions for other artists. During the next few years Capitol released a number of Campbell recordings; however, none became the big hit that the label was looking for to launch Glen's career.

Then, in 1967, Glen found a song in Nashville, "Gentle On My Mind," which became an overnight smash. That was followed almost immediately by "Phoenix," "Hey, Little One," and a string of others including "Wichita Lineman." Along with the singles came the hit LP's and by early 1968, Glen had established himself as one of the finest young singers in the country

What kind of songs does he sing?

"I don't think," Glen explains, "they fall into any particular category. If there's anything about them I think it's the lyrics...they're meaningful and I hope they say something to all people".



Side 1

Only The Lonely (Acuff-Rose Pubs. Inc.)	2:14
Same Old Places (American Music, Inc.)	2:09
Woman's World (Cedarwood Pub. Co. Inc.)	2:10
Heartaches Can Be Fun (Central Songs, Inc.)	1:50
Let Me Tell You 'Bout Mary (Central Songs, Inc.)	2:05

Side 2

Through The Eyes Of A Child (American Music, Inc.)	2:40
That's All Right (Brenner Music, Inc.)	2:18
Prima Donna (Four Star Music Co. Inc.)	2:29
Can't You See I'm Tryin' (Four Star Music Co. Inc.)	2:51

BY ARRANGEMENT WITH
CAPITOL
RECORDS

THE GLEN
CAMPBELL
ALBUM

SPC 3274-A
(PRL 106)



SIDE 1
STEREO

WARNING: Unauthorized reproduction
of this recording is prohibited by Federal
law and subject to criminal prosecution.

- | | |
|---|------|
| 1. ONLY THE LONELY
(R. Orbison-J. Nelson) | 2:14 |
| 2. SAME OLD PLACES (G. Campbell) | 2:09 |
| 3. WOMAN'S WORLD (W.T. Walker) | 2:10 |
| 4. HEARTACHES CAN BE FUN
(B. Bare-C. Williams) | 1:50 |
| 5. LET ME TELL YOU 'BOUT MARY
(B. Bare) | 2:05 |
- A Product of Pickwick International, Inc. Minneapolis, MN Printed in U.S.A.

BY ARRANGEMENT WITH
CAPITOL
RECORDS

THE GLEN
CAMPBELL
ALBUM

SPC 3274-B
(PRL 106)



SIDE 2
STEREO

WARNING: Unauthorized reproduction
of this recording is prohibited by Federal
law and subject to criminal prosecution.

- | | |
|--------------------------------|------|
| 1. THROUGH THE EYES OF A CHILD | 2:40 |
| (J. Capehart-G. Campbell) | |
| 2. THAT'S ALL RIGHT (A. Inman) | 2:18 |
| 3. PRIMA DONNA (J. Fuller) | 2:29 |
| 4. CAN'T YOU SEE I'M TRYIN' | 2:51 |
| (J. Fuller-G. Campbell) | |

A Product of Pickwick International, Inc. Minneapolis, MN Printed in U.S.A.